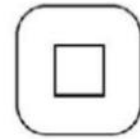
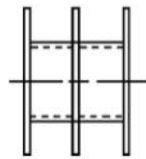
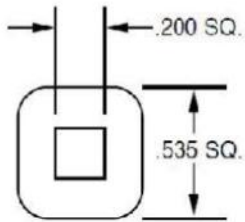
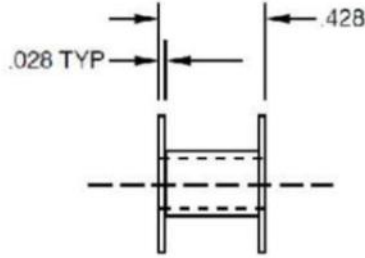


Part #: 6100
 Part # 6103

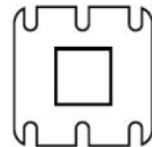
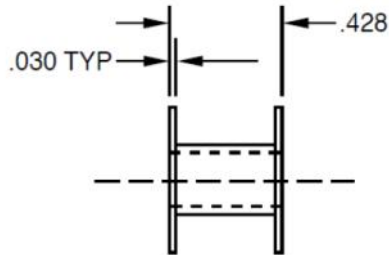
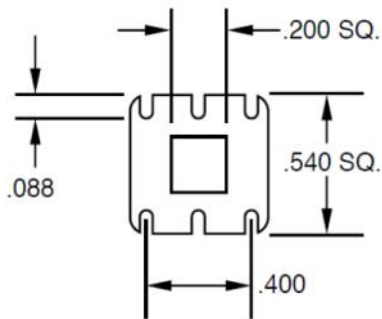
1 section
 2 section

EI 187 x 3/16



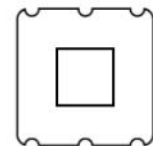
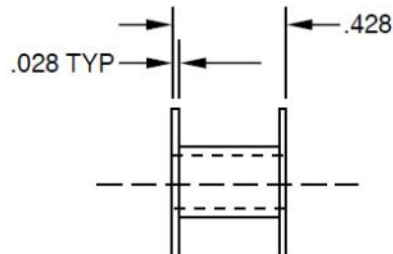
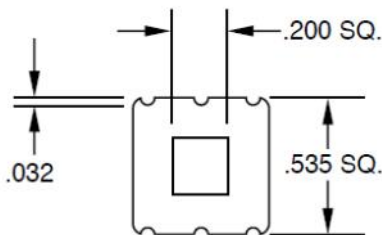
Part #: 6101

EI 187 x 3/16



Part #: 6102

EI 187 x 3/16





511 East Pine Avenue Bensenville IL 60106

Phone: 847-671-0060

Fax: 847-671-0694

Email: tjainfo@tjassemblies.com

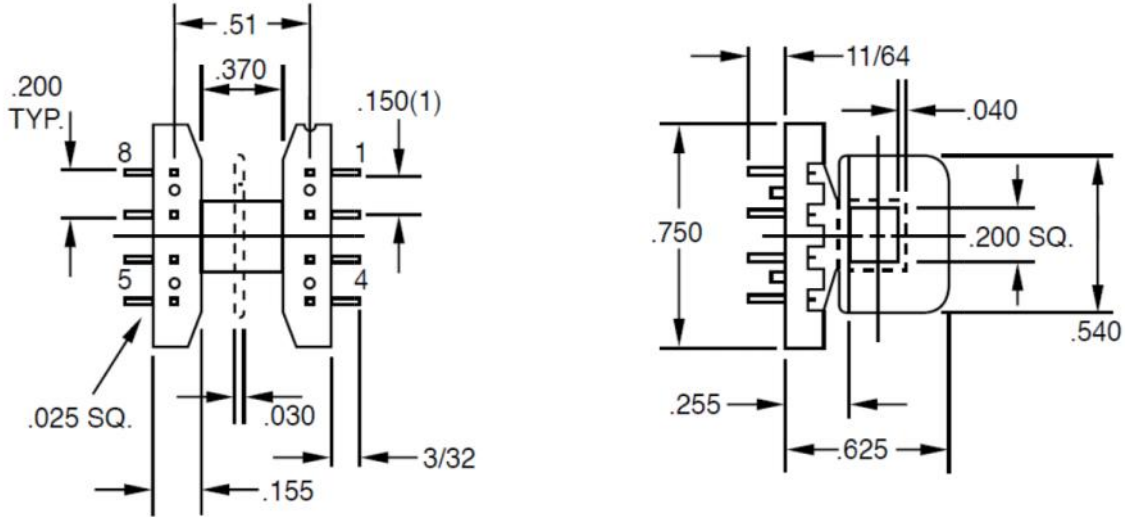
Website: www.tjassemblies.com

Part #'s: 1101
1102
1103
1104

Part # With 8 Wires	Sections	Standoffs
1101-01	1	No
1102-01	1	Yes
1103-01	2	No
1104-01	2	Yes

EI 187 x 3/16

Uses .025 Square Wire



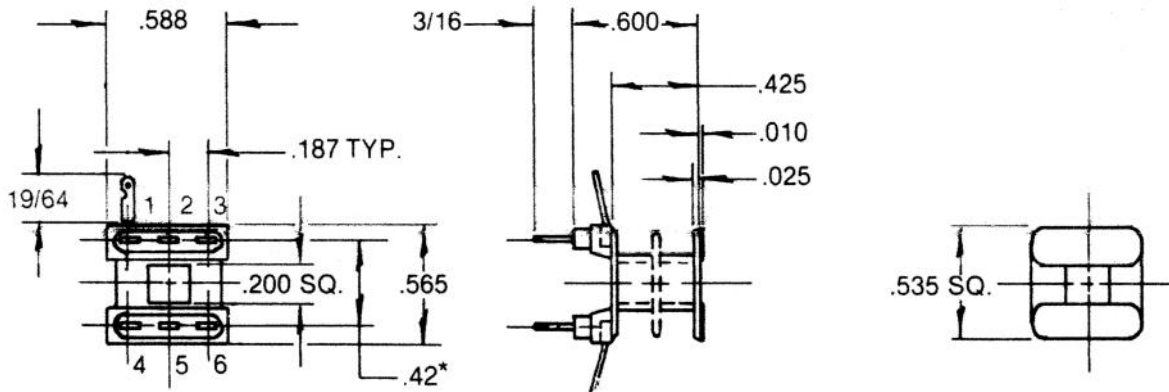
Part #'s: 1001
1002

Part # With 6 Terminals	Sections	Standoffs
1001-01	1	No
1002-01	2	No

EI 187 x 3/16

Insulated Lead Slots

Uses Terminal #: 201



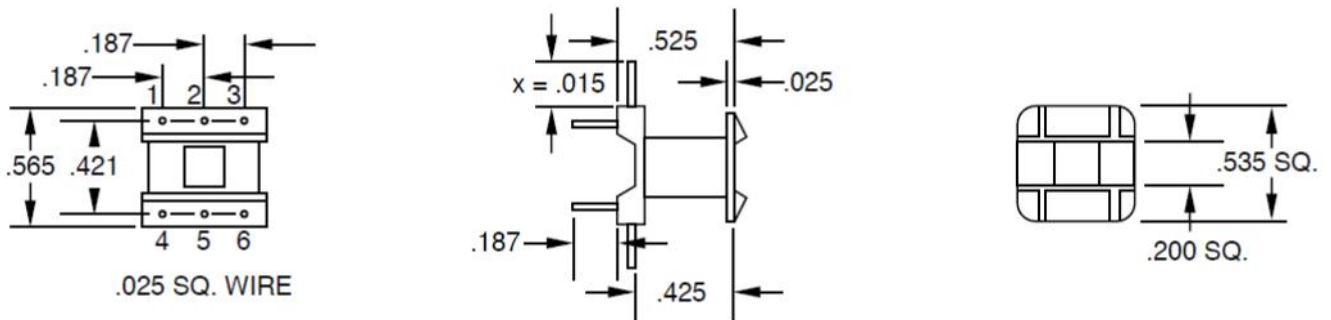
*REFERENCE DIM. BASED ON LUG POCKET CENTERS

Part #: 1003

Part # With 6 Wires	Sections	Standoffs
1003-01	1	No

EI 187 x 3/16

X pin length is .300" standard can be any length requested.



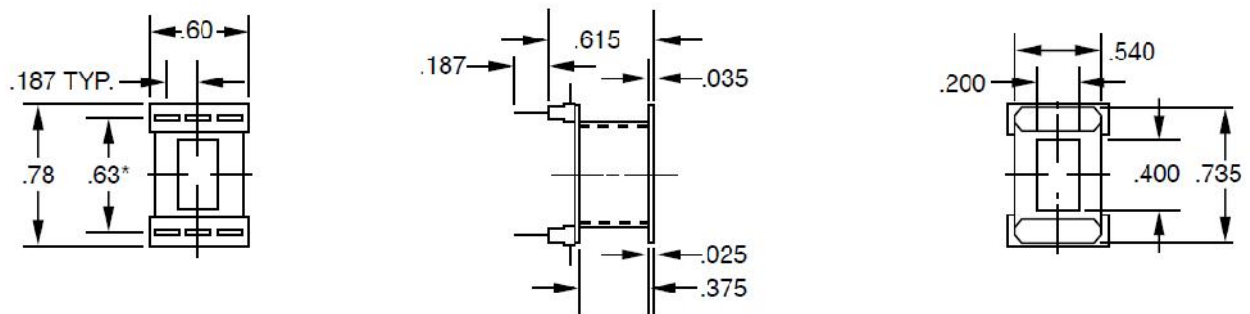
Part #: 1004

Part # With 6 Terminals	Sections	Standoffs
1004-01	1	No

EI 187 x 3/8

Insulated Lead Slots

Uses Terminal #: 201



*REFERENCE DIM. BASED ON LUG POCKET CENTERS



511 East Pine Avenue Bensenville IL 60106

Phone: 847-671-0060

Fax: 847-671-0694

Email: tjainfo@tjassemblies.com

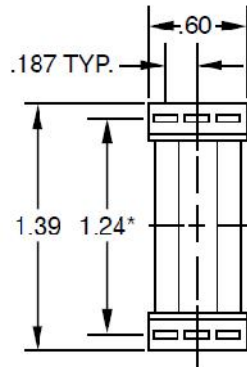
Website: www.tjassemblies.com

Part #: 1006

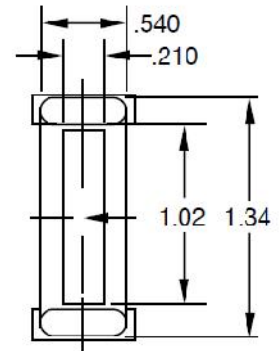
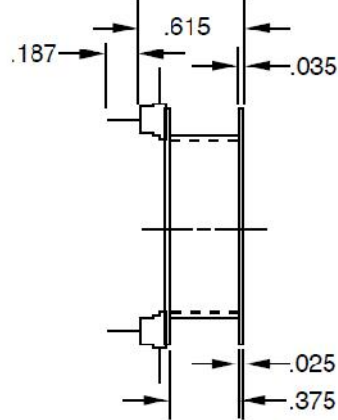
Part # With 6 Terminals	Sections	Standoffs
1006-01	1	No

EI 187 x 1

Insulated Lead Slots



Uses Terminal #: 201



*REFERENCE DIM. BASED ON LUG POCKET CENTERS