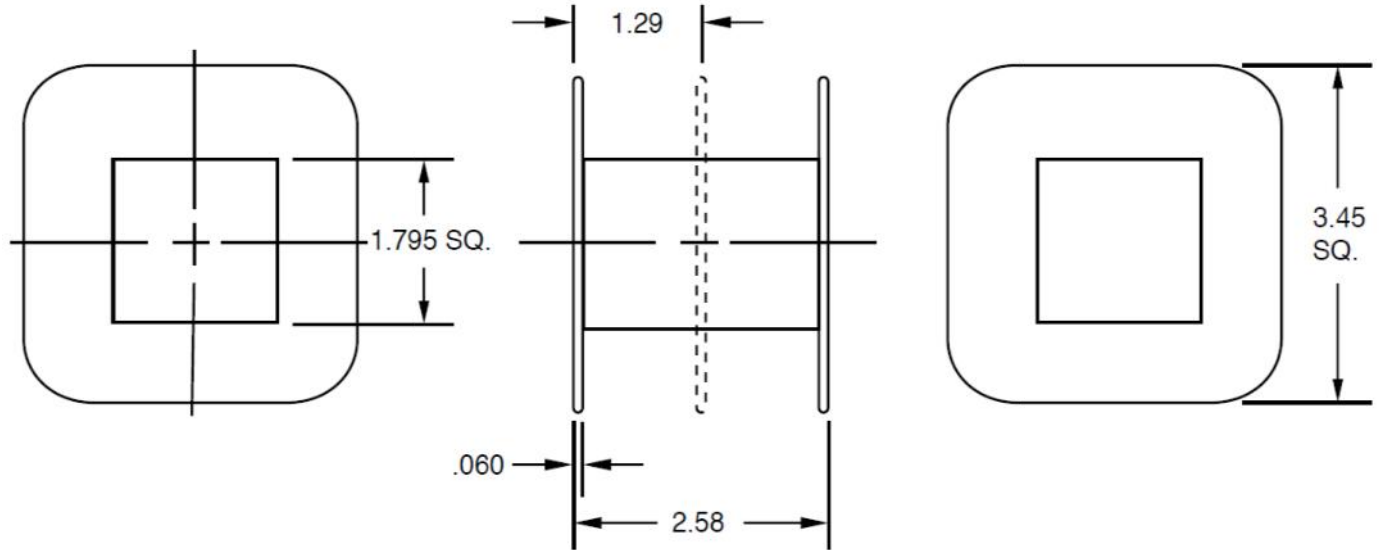


Part #'s: 6600  
 6601

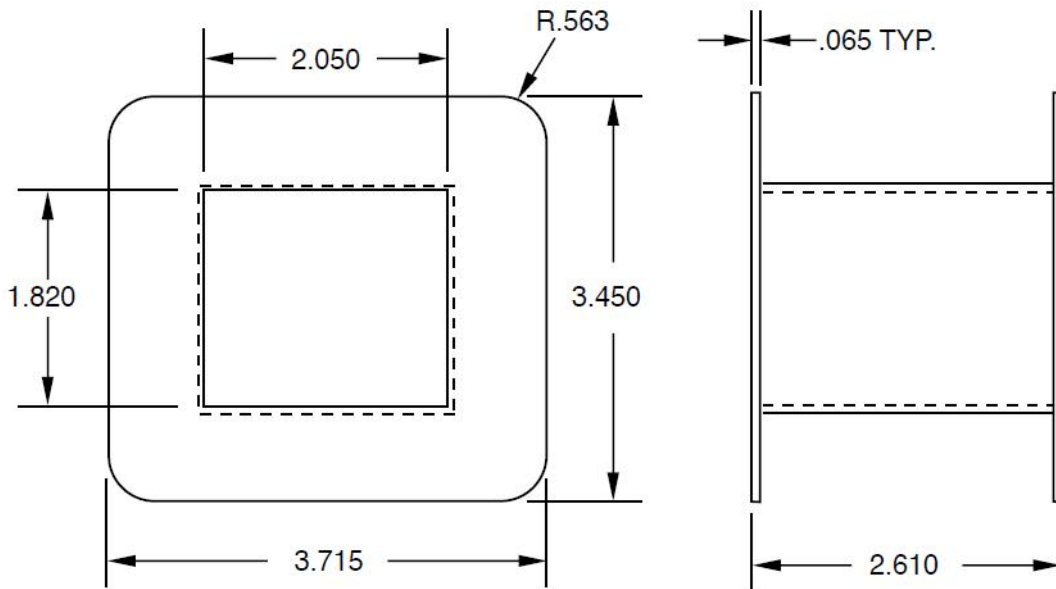
Part #	Sections
6600-00	1
6601-00	2

EI 175 x 1 3/4



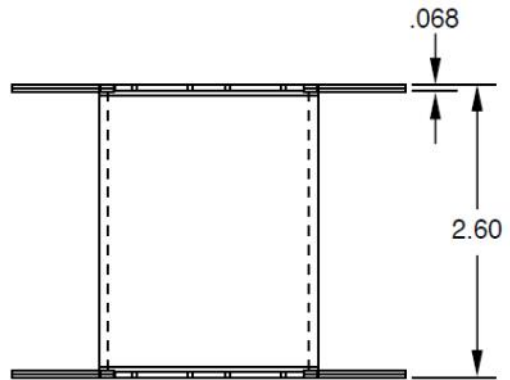
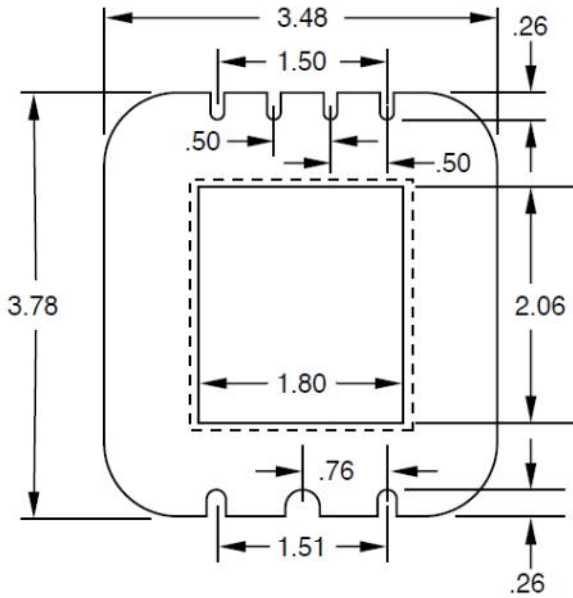
Part #: 6605

EI 175 x 2



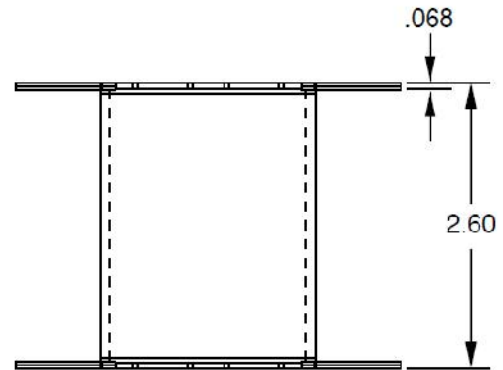
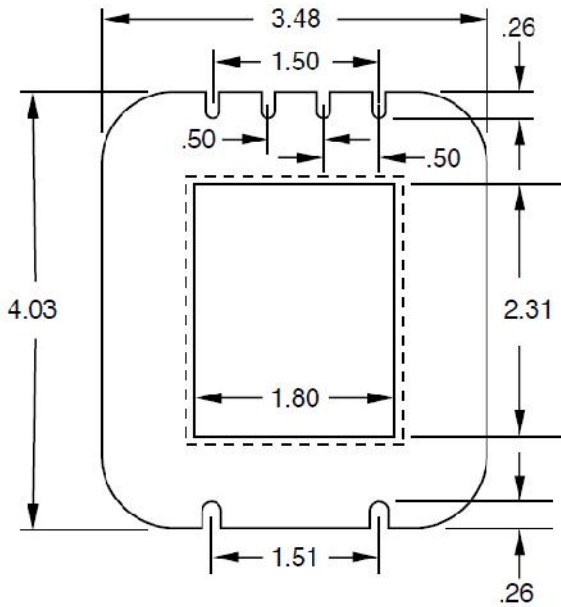
Part #: 6606

EI 175 x 2



Part #: 6607

EI 175 x 2 1/4





511 East Pine Avenue Bensenville IL 60106

Phone: 847-671-0060

Fax: 847-671-0694

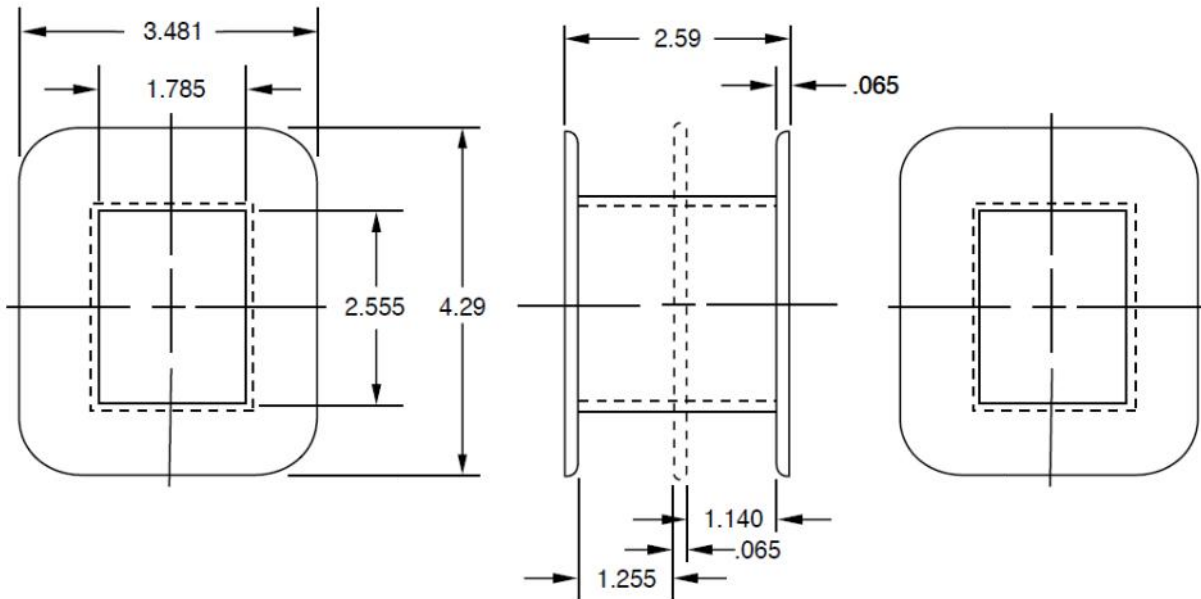
Email: [tjainfo@tjassemblies.com](mailto:tjainfo@tjassemblies.com)

Website: [www.tjassemblies.com](http://www.tjassemblies.com)

Part #'s: 6608  
6609

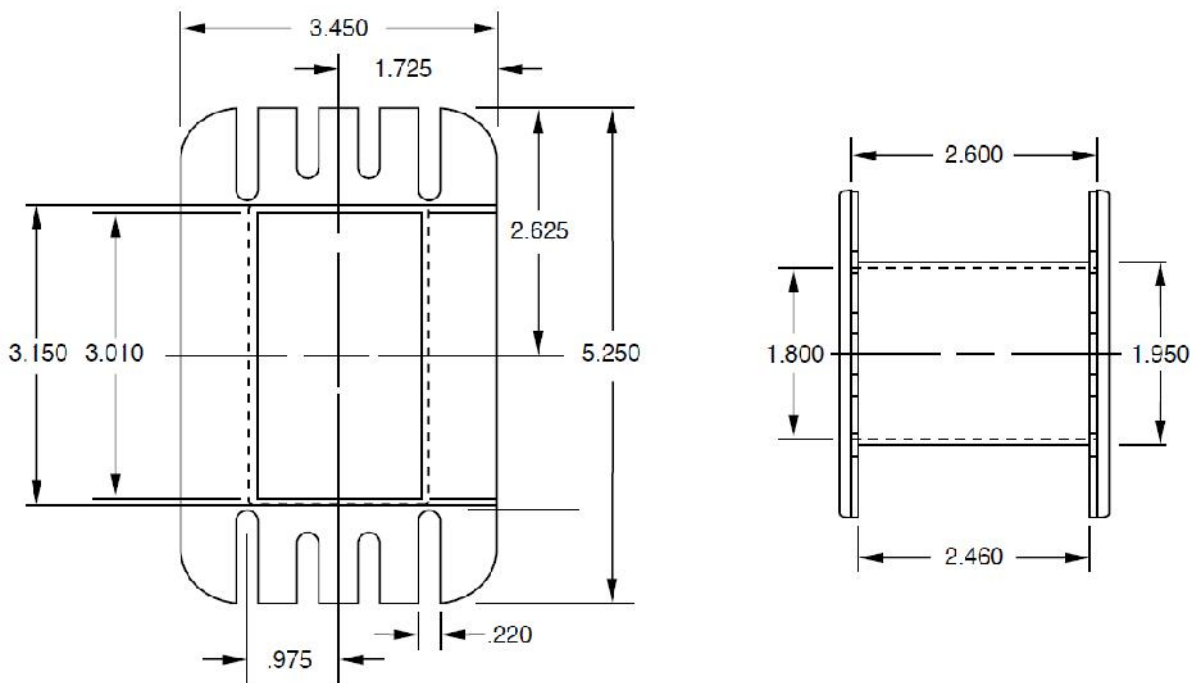
Part #	Sections
6608-00	1
6609-00	2

EI 175 x 2 1/2



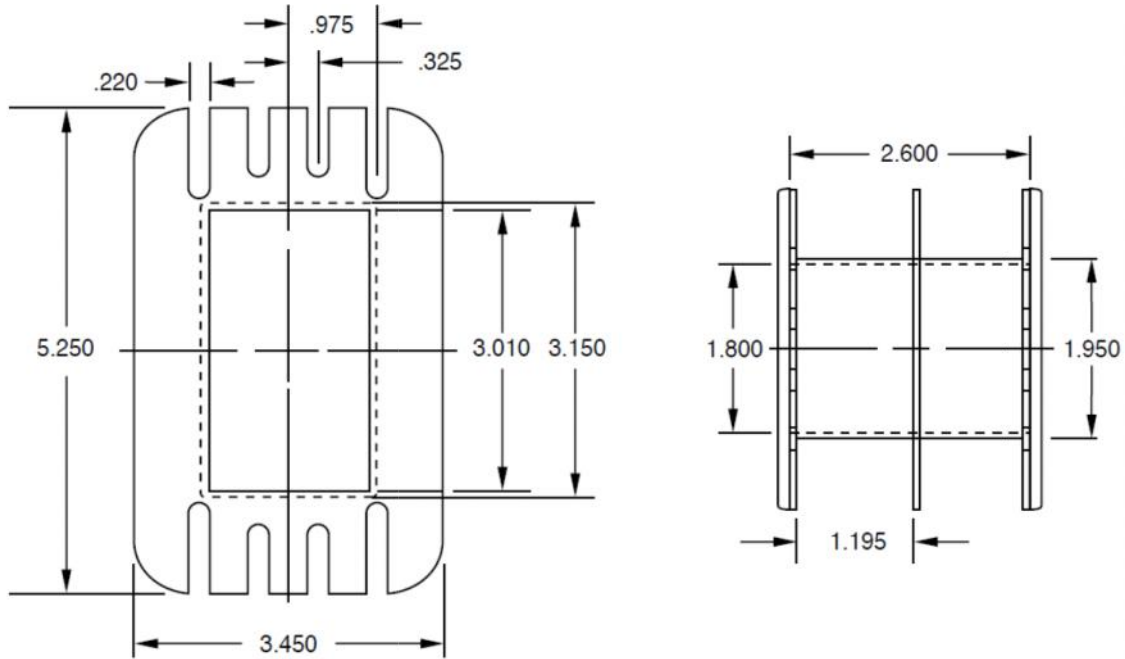
Part #: 6603

EI 175 x 3



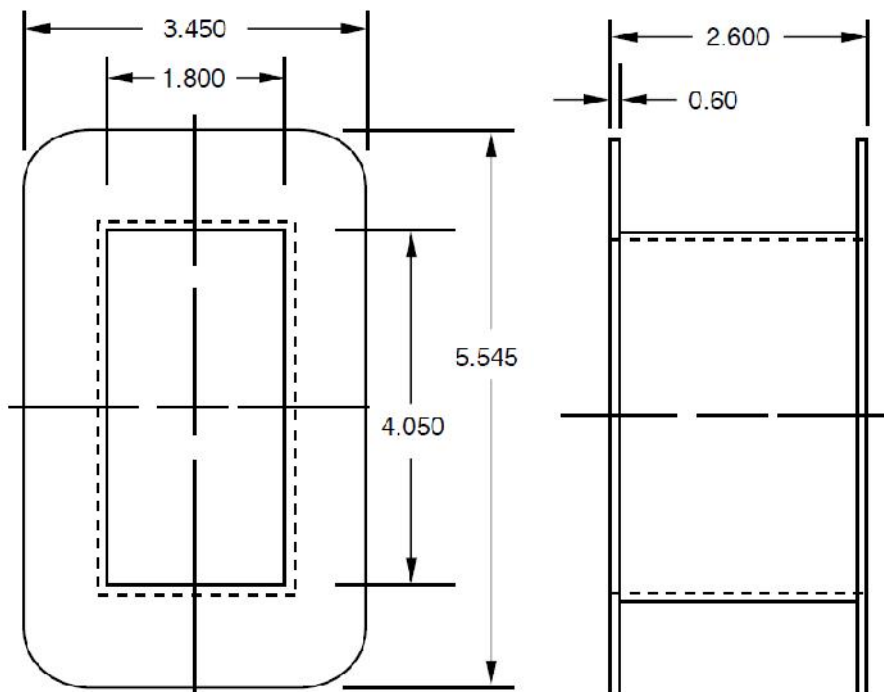
Part #: 6604

EI 175 x 3



Part #: 6602

EI 175 x 4



Part #: 6610

EI 175 x 4

