

POT CORE BOBBIN

(Thru Hole and Surface Mount)

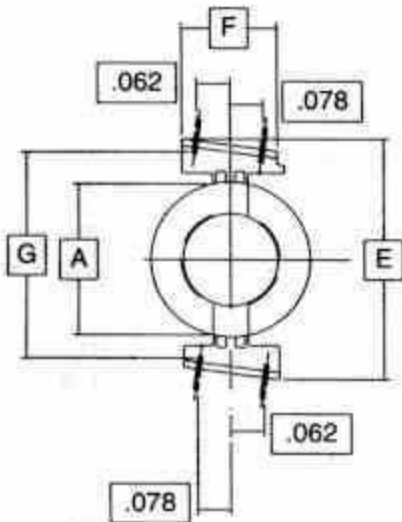


Fig.1

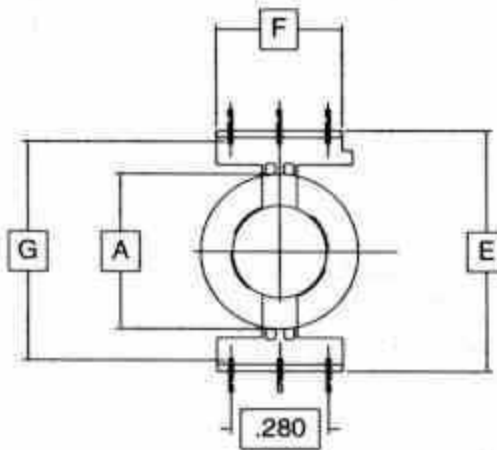


Fig.2

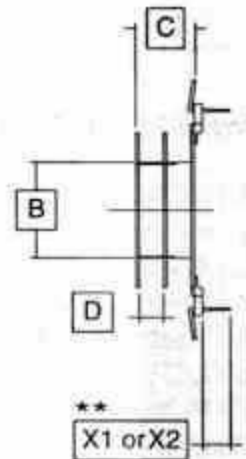
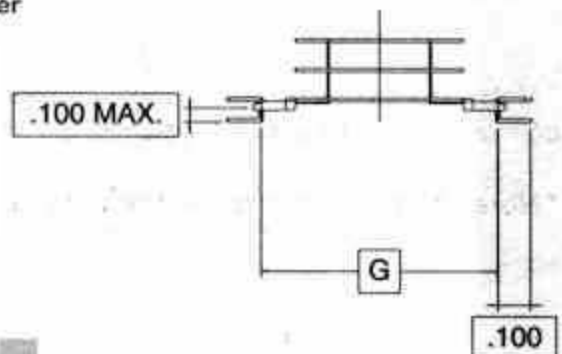


Fig.3

| Part Number | Dimensions in Inches | | | | | | | | | |
|-------------|----------------------|--------|--------|--------|----------|--------|--------|--------|-----------|-----------|
| | Fig No. | A MAX. | B MAX. | C MAX. | * D Nom. | E MAX. | F MAX. | G Nom. | X1** Nom. | X2** Nom. |
| P 1408-01 | 1&3 | .453 | .280 | .213 | .175 | .748 | .232 | .638 | .187 | .261 |
| P 1408-02 | 1&3 | .453 | .280 | .213 | .080 | .748 | .232 | .638 | .187 | .261 |
| P 1408-6-01 | 2&3 | .453 | .280 | .213 | .175 | .748 | .402 | .638 | .187 | .261 |
| P 1408-6-02 | 2&3 | .453 | .280 | .213 | .080 | .748 | .402 | .638 | .187 | .261 |
| P 1811-01 | 2&3 | .583 | .343 | .277 | .238 | .937 | .402 | .852 | .187 | .261 |
| P 1811-02 | 2&3 | .583 | .343 | .277 | .110 | .937 | .402 | .852 | .187 | .261 |
| P 2213-01 | 2&3 | .701 | .421 | .354 | .307 | 1.071 | .402 | .990 | .187 | .261 |
| P 2213-02 | 2&3 | .701 | .421 | .354 | .145 | 1.071 | .402 | .990 | .187 | .261 |
| P 2616-01 | 2&3 | .823 | .504 | .425 | .378 | 1.209 | .402 | 1.131 | .187 | .261 |
| P 2616-02 | 2&3 | .823 | .504 | .425 | .180 | 1.209 | .402 | 1.131 | .187 | .261 |

** If short pin (X1) is desired, substitute 1 for 0 in part number
If long pin (X2) is desired, substitute 2 for 0 in part number

Surface Mount Style



*Note-Some 2 section bobbins are available with solid center flange to provide complete isolation between windings. Center flange optional.