

PRINTED CIRCUIT BOBBINS

(THRU HOLE AND SURFACE MOUNT)

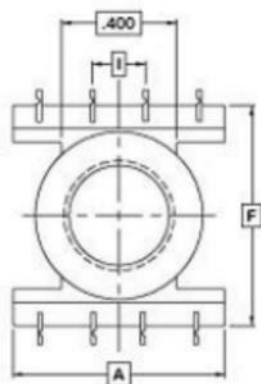


FIG. 1

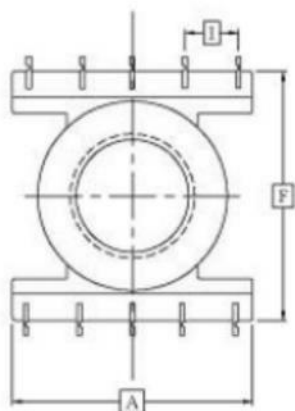


FIG. 2

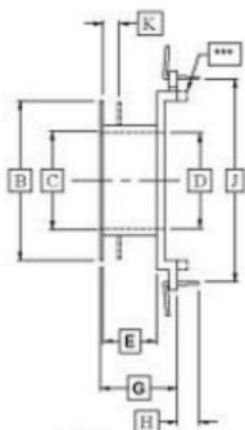


FIG. 3

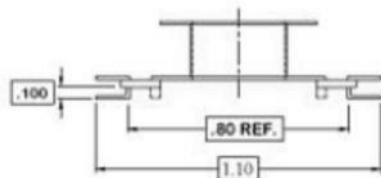
PART NUMBER	DIMENSIONS IN INCHES											
	FIG No.	A MAX.	B MAX.	C MIN.	D MIN.	E Nom.	F MAX.	G MAX.	H Nom.	I Nom.	J Nom.	K
P2311-S	2&3	.770	.690	.440	.395	.203	.900	.300	.220	.150	.800	NA
P2318-S	2&3	.910	.685	.440	.395	.468	.900	.560	.220	.150	.800	.044
P1811-8-TT	1&3	.650	.585	.345	.296	.225	.760	.370	.155	.150	.650	NA

*OTHER PIN LENGTHS AVAILABLE

** APPLIES TO ONLY 2311 AND 2318 BOBBINS

(CALL FOR FURTHER DETAILS ON 1811)

*** APPLIES TO ONLY 1811-8-TT



** Surface Mount Style