

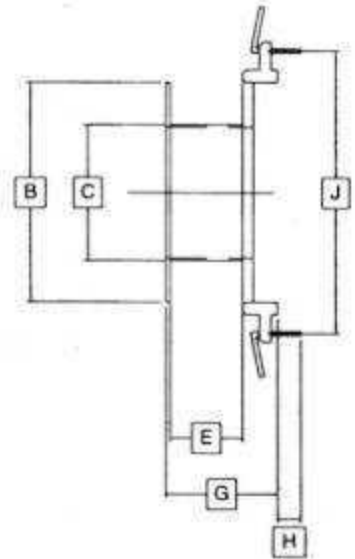
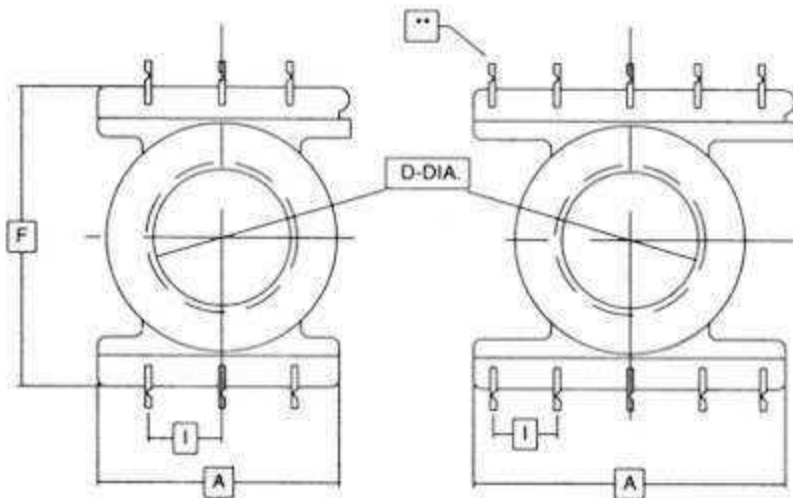
# PRINTED CIRCUIT BOBBINS

(Thru Hole and Surface Mount)

Fig. 1

Fig. 2

Fig. 3



Part Number	Dimensions in Inches										
	FIG. No.	A MAX.	B MAX.	C MAX.	D MIN.	E Nom.	F MAX.	G MAX.	H Nom.	I Nom.	J Nom.
P 1408-10S	2,3	.600	.454	.287	.242	.160	.653	.300	.188	.100	.550
P 1408-6S	1,3	.503	.454	.287	.242	.160	.653	.300	.188*	.150	.550
P 3019-S	2,3	1.105	.981	.587	.534	.424	1.210	.643	.188*	.200	1.100

\* Terminal also available in lengths of .155 or .175

\*\* PCB 3019-S bobbin has terminal notch direction opposite to that shown above.

Some sizes available in Surface Mount.

Please call for more details.