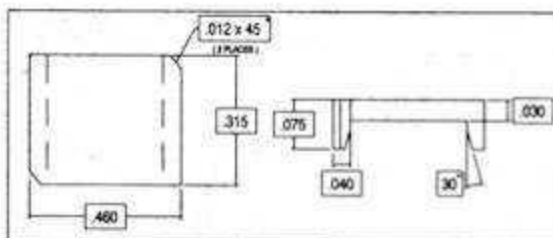
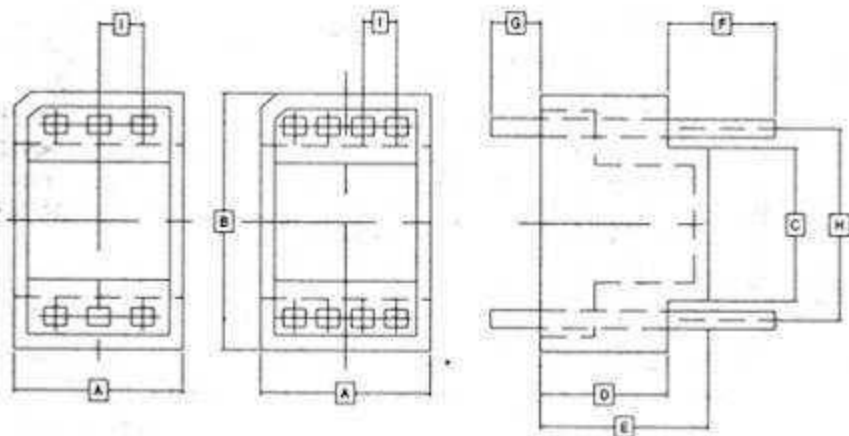


ENCAPSULATION CASE

Style 1
(6 pins)

Style 2
(8 pins)



Part Number	Dimensions in Inches								
	A	B	C	D	E	F*	G*	H	I
**S-100-1-61	.350	.500	.340	.170	.250	.230	.080	.400	.100
**S-100-1-62	.350	.500	.340	.163	.243	.472	.125	.400	.100
**S-100-1-63	.350	.500	.340	.163	.250	.830	.125	.400	.100
S-100-1-64	.350	.500	.340	.170	.250	.230	.070	.400	.100
S-100-2-81	.570	.730	.570	.270	.350	.215	.120	.625	.100

(Available with standoffs)

ORDERING INFORMATION

Terminals- .017" Sq. Phosphor Bronze

SERIES STYLE CODE NO.

S-100 -1 -61

NOTE: Other sizes and pin configurations available.

* Parts available with various F & G dimensions

** See inset for mating lid

S-100-2-81 has 8 pins, all others have 6 pins